



OLD MUTUAL TWO OCEANS MARATHON 2018 31 MARCH 2018
Packages with flights (O R Tambo), accommodation, transfers & 56KM race entry

Penthouse Travel are the only **OFFICIAL TRAVEL PARTNER** for the **2018 OLD MUTUAL TWO OCEANS MARATHON**. We are a full service Travel Agency and since 1983 have been specialising in Sports Travel and Groups.

Thank you for considering us for your travel arrangements. **These prices INCLUDE 56KM RACE ENTRY for RSA residents, please us to re-quote if you do not require race entry.**

- **To request reservations we require;** A completed booking form (signed by each traveller), T&C's (signed by each traveller) and ID copies of each traveller. Upon receipt (subject to availability) a written confirmation will be sent.
- **To secure bookings we require;** 30% deposit or R 1000 (whichever is greater) per person within 7 days of written confirmation.
- The balance monies will be due before 22 December 2017.

We take care of the travel details so you can concentrate on the event.

Prices are per person and include;

- 56KM Race Entry (Sat 31 March 2018)*
- Accommodation at hotel selected
- Flights as shown from Johannesburg O R Tambo (economy class)*
- Transport from airport on arrival to hotel (Newlands hotels) via the Two Oceans Marathon Expo*
- Transport from airport on arrival to hotel (Waterfront hotels)*
- Transport to start of Two Oceans Marathon from Waterfront hotels*
- Transport back to hotel after the race (all hotels)*
- Entry to our Hospitality Tent at the race finish.*
- Transport from hotel (all hotels) to airport*

*See notes below

ACCOMMODATION OPTIONS

| Hotels in Newlands | Fri – Sun 2 nights | Thu – Sun 3 nights | Fri – Mon 3 nights | Wed – Sun 4 nights | Thu – Mon 4 nights | Prices are per person |
|---|-----------------------|-----------------------|-----------------------|-----------------------|-----------------------|--------------------------------------|
| Park Inn Newlands (Breakfast included) | | R 7080 | R 7130 | R 7375 | R 7925 | Sharing Double room |
| Park Inn Newlands (Breakfast included) | | R 8685 | R 8735 | R 9515 | R 10065 | Single room |
| Vineyard Hotel (Breakfast included) | | R 8730 | R 8780 | R 9575 | R 10125 | Sharing Courtyard Facing Double room |
| Vineyard Hotel (Breakfast included) | | R 10845 | R 10895 | R 12395 | R 12945 | Single Courtyard Facing room |



| | | | | | | |
|--|--|---------|---------|---------|---------|---|
| Vineyard Hotel (Breakfast included) | | R 9150 | R 9200 | R 10135 | R 10685 | Sharing Deluxe Courtyard Facing Double room |
| Vineyard Hotel (Breakfast included) | | R 11310 | R 11360 | R 13015 | R 13565 | Deluxe Courtyard Facing Single room |
| Vineyard Hotel (Breakfast included) | | R 9660 | R 9710 | R 10815 | R 11365 | Sharing Mountain Facing Double room |
| Vineyard Hotel (Breakfast included) | | R 11790 | R 11840 | R 13655 | R 14205 | Mountain Facing Single room |
| Vineyard Hotel (Breakfast included) | | R 10570 | R 10620 | R 12025 | R 12575 | Sharing Deluxe Mountain Facing Double room |
| Vineyard Hotel (Breakfast included) | | R 13605 | R 13655 | R 16075 | R 16625 | Deluxe Mountain Facing Single room |

| Hotels in V & A Waterfront area | Fri – Sun 2 nights | Thu – Sun 3 nights | Fri – Mon 3 nights | Wed – Sun 4 nights | Thu – Mon 4 nights | Prices are per person |
|---|-----------------------|-----------------------|-----------------------|-----------------------|-----------------------|-------------------------------|
| Breakwater Lodge (Room only) | R 6715 | R 7625 | R 7675 | R 8035 | R 8585 | Sharing Double room |
| Breakwater Lodge (Room only) | R 7495 | R 8795 | R 8845 | R 9595 | R 10145 | Single room |
| Breakwater Lodge (Room only) | R 6595 | R 7445 | R 7495 | R 7825 | R 8375 | Sharing a Triple Unit |
| Breakwater Lodge (Room only) | R 6170 | R 6810 | R 6860 | R 6945 | R 7555 | Sharing a Quad Unit |
| Breakwater Lodge (Room only) | R 7175 | R 8315 | R 8365 | R 8955 | R 9505 | Sharing Double Business Suite |
| Breakwater Lodge (Room only) | R 8855 | R 10835 | R 10885 | R 12315 | R 12865 | Single Business Suite |
| City Lodge Waterfront (Room only) | R 6925 | R 7940 | R 7990 | R 8455 | R 9005 | Sharing Double room |
| City Lodge Waterfront (Room only) | R 8315 | R 10025 | R 10075 | R 11235 | R 11785 | Single room |
| SSun Waterfront (Breakfast included) | R 7130 | R 8250 | R 8300 | R 8635 | R 9185 | Sharing Double room |
| SSun Waterfront (Breakfast included) | R 9365 | R 11600 | R 11650 | R 12875 | R 13425 | Single room |

FLIGHT OPTIONS

| Date | Airline | Flight Number | From | +/- Time | To | +/- Time | Included in package? |
|---------------|---------|---------------|-----------|----------|-----------|----------|----------------------------|
| Wed, 28 March | Mango | JE133 | O R Tambo | 10h55 | Cape Town | 13h05 | Yes |
| Thu, 29 March | Kulula | MN121 | O R Tambo | 09h10 | Cape Town | 11h20 | Yes |
| Thu, 29 March | Kulula | MN103 | O R Tambo | 11h50 | Cape Town | 14h00 | Yes |
| Thu, 29 March | Kulula | MN105 | O R Tambo | 15h25 | Cape Town | 17h35 | Yes |
| Fri, 30 March | Kulula | MN101 | O R Tambo | 06h25 | Cape Town | 08h35 | Yes |
| Fri, 30 March | Kulula | MN121 | O R Tambo | 09h10 | Cape Town | 11h20 | Yes |
| | | | | | | | |
| Sun, 01 April | Kulula | MN114 | Cape Town | 10h55 | O R Tambo | 12h55 | Yes |
| Sun, 01 April | Kulula | MN112 | Cape Town | 11h45 | O R Tambo | 13h45 | No, additional charge R200 |

| | | | | | | | |
|---------------|--------|-------|-----------|-------|-----------|-------|----------------------------|
| Sun, 01 April | Mango | JE166 | Cape Town | 13h15 | O R Tambo | 15h10 | No, additional charge R300 |
| Mon, 02 April | Mango | JE148 | Cape Town | 11h50 | O R Tambo | 13h45 | Yes |
| Mon, 02 April | Kulula | MN124 | Cape Town | 11h55 | O R Tambo | 13h55 | No, additional charge R400 |
| Mon, 02 April | Mango | JE166 | Cape Town | 13h15 | O R Tambo | 15h10 | No, additional charge R100 |
| Mon, 02 April | Kulula | MN104 | Cape Town | 14h35 | O R Tambo | 16h35 | No, additional charge R400 |

Flights are contracted to us as group fares and the airlines usually do not allow online check in, advance pre seating and loyalty membership accrual of miles/points on group fares.

56KM OLD MUTUAL TWO OCEANS MARATHON (OMTOM) RACE ENTRY

Included in this travel package is race entry for the 56km. The cost of the race entry fee has been covered. Other items such as (but not limited to) timing chip (R130) is extra and payment will need to be made online when you enter your data. More details on the entry process will be available when you have booked and paid deposit. If you require a package without entry please ask us.

RACE FINISH PENTHOUSE TRAVEL HOSPITALITY TENT – SATURDAY 31 MARCH 2018

At the race finish area we have a hospitality tent, exclusively for guests who have booked with Penthouse Travel Sporting Tours for the 2018 Two Oceans Marathon. The tent is a sheltered area at the race finish where guests can relax and enjoy light refreshments. From the tent our guests are taken back to their hotel (shuttle service).

RETURN AIRPORT TRANSFERS

Newlands Hotel guests

If the flight arrives during race registration times we take guests to the Expo en route from the airport to your hotel. The waiting time at the Expo is usually 1 hour but can be more or less depending on how busy it is. If flight arrives outside Expo times we ask guests to go to race registration in their own time (taxi or hotel transport – at own cost).

On the day of departure we will collect guests and take them from the hotel to the airport.

V & A Waterfront Hotel guests

The race registration venue is walking distance from these hotels so we take guests to the hotel from the airport and ask that they go to race registration in their own time. See hotel descriptions for distance from hotels to CTICC.

On the day of departure we will collect guests and take them from the hotel to the airport.

RACE DAY TRANSFERS

Newlands Hotel guests

The hotels are easy walking distance to the race start and so guests staying at Park Inn Newlands and The Vineyard Hotel will walk down to the race start. See hotel descriptions for distance from hotels to the race start.

V & A Waterfront Hotel guests

Penthouse Travel staff will collect runners from their hotel at 04h30 and take them to the race start. Spectators will be collected from their hotel at a later time (07h00 for 21km spectators or 08h30 for 56km spectators) and taken to the race finish. Journey time on race day can be between 20 to 45 minutes due to traffic.

After the race we provide transport to all our hotels. This service is complimentary if accommodation has been booked with Penthouse Travel Sporting Tours for the Two Oceans Marathon weekend.

SIGHTSEEING TOURS / CAR HIRE

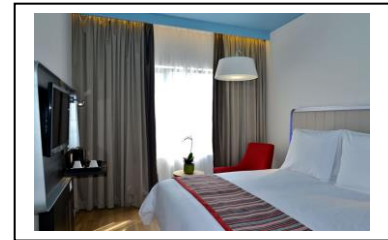
We can arrange car hire, discounted Springbok Atlas sightseeing tours, helicopter flips etc. More details on request.

TRAVEL INSURANCE

Travel Insurance Consultants has strongly recommended that you purchase travel insurance cover for the duration of your trip. The premium for the marathon weekend is *R 183 for each Ultra marathon runner (Local policy, up to 8 days consecutive period). Terms and conditions apply, more details available on request. *70 – 79 years – a supplement will apply. Please advise if you wish us to arrange Travel Insurance on your behalf. If we do not receive written instructions and payment we assume you do not require it.

PARK INN by Radisson - NEWLANDS (Superior 3*) *Breakfast included*****

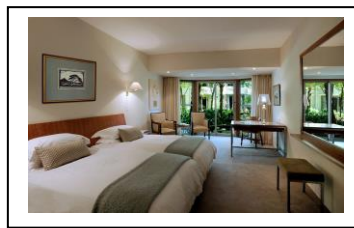
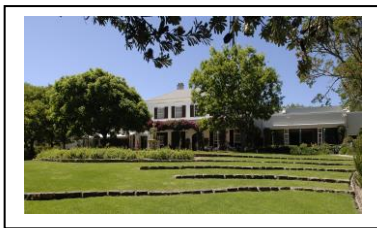
- Situated in Main Road Newlands
- Walking distance (approx. 100 metres) to Race start (Newlands)
- Approx. 5kms from the race finish (UCT)
- Free transfer from race finish



Set in a residential suburb Newlands and across the road from the race start. This hotel offers excellent value for money. Amenities include free Wi-Fi, access to the hotel gym and outside swimming pool. Guest rooms are modern and bright with bathroom (shower) and tea/coffee amenities. This hotel has one restaurant and is within walking distance to shops and other restaurants. The Cape Town business district and Waterfront area are approx. 20 minute drive away.

VINEYARD HOTEL & SPA – NEWLANDS (Deluxe 4*) *Breakfast included*****

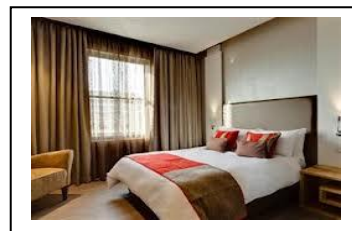
- Free Carbo Loading Dinner Fri 30 March
- Walking distance (less than 1km) to Race start (Newlands)
- Approx. 3kms drive from the race finish (UCT)
- Free transfer from race finish



This deluxe hotel is situated in six acres of attractive landscaped parkland, in the residential suburb of Newlands. Ideally situated and within walking distance to shops, restaurants and less than 1 km of the race start. Originally built by Lady Anne Barnard in 1799, the Vineyard Hotel & Spa has a relaxing colonial feel with spectacular views of the forested slopes of Table Mountain. Guests can relax at the heated outdoor and indoor swimming pool, adjoined by a fitness centre and the international Angsana Spa (pre booking essential). For the discerning traveller looking for superior accommodation in a relaxed environment The Vineyard Hotel & Spa is excellent value for money. Free Wi-Fi and guest rooms are furnished in soft colours with luxurious bathrooms (separate bath and shower), mini-bar fridge and tea/coffee amenities. The Cape Town business district and Waterfront area are approx. 20 to 40 minute drive away. A carbo loading dinner takes place at the hotel on Friday 30th March and typically includes a buffet selection of pastas and salads (beverages and gratuities are not included).

PROTEA by Marriott BREAKWATER LODGE – WATERFRONT (Superior 3*)

- Situated in the V & A Waterfront and approx. 15 minutes' walk through the Waterfront to the Expo (CTICC)
- Approx. 30 to 45 minutes' drive to the race start (Newlands)
- Approx. 20 to 40 minutes' drive from the race finish (UCT)
- Free return race day transfers



Perfectly positioned in the heart of the V & A Waterfront, minutes from many eateries and entertainment centres, approximately 11 kms drive to the race start/finish (see race transfer details below). Once a 19th century prison the hotel provides comfortable accommodation that overlooks Cape Town harbour and Table Mountain. Free Wi-Fi. Each room is air conditioned and has a small fridge and tea/coffee making facilities. All guest rooms have a shower except for the business suites which have a bath and shower. Breakfast is not included in our cost but can be arranged and paid directly to the hotel (R185) or you can eat at any of the establishments in the area (your own cost).

CITY LODGE - WATERFRONT (Superior 3*)

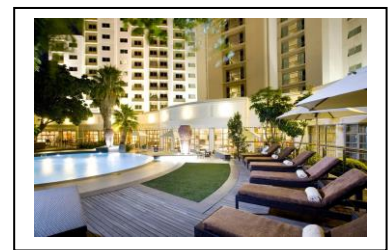
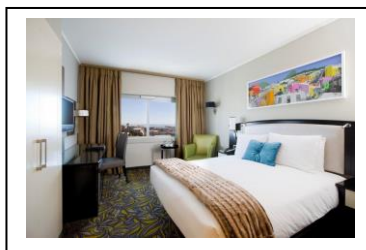
- Situated at the entrance to the Waterfront and opposite the CTICC (Expo)
- Approx. 30 to 45 minutes’ drive to the race start (Newlands)
- Approx. 20 to 40 minutes’ drive from the race finish (UCT)
- Free return race day transfers



City Lodge Hotel Victoria and Alfred Waterfront is conveniently located right at the entrance to the V&A Waterfront – allowing guests to not only easily enjoy this great Cape Town attraction. It’s a very short walk to the Cape Town Convention Centre, the Cape Town CBD and approximately 9 kms drive to the race start/finish. A nautical theme runs through the hotel and guest rooms are bright and spacious with nice bathrooms (separate bath and shower), small fridge and tea/coffee amenities. The hotel facilities include free Wi-Fi, an outdoor (un-heated) pool, gym and bar. Breakfast is not included in our cost but can be arranged and paid directly to the hotel (R155) or you can eat at any of the establishments in the area (your own cost).

SOUTHERN SUN - WATERFRONT (Superior 4*) *Breakfast included*****

- Situated at the entrance to the Waterfront and opposite the CTICC (Expo)
- Approx. 30 to 45 minutes’ drive to the race start (Newlands)
- Approx. 20 to 40 minutes’ drive from the race finish (UCT)
- Free return race day transfers



Modern and comfortable this 4* hotel offers guests easy access to most of Cape Town’s attractions. Within easy walking distance to the world-renowned V&A Waterfront, the Cape Town Convention Centre and the Cape Town CBD and approximately 9 kms drive to the race start/finish. Guest rooms are bright and spacious with luxurious bathrooms (separate bath and shower), small fridge and tea/coffee amenities. The hotel facilities include an outdoor (un-heated) pool, gym and free Wi-Fi.

Availability is limited so don't delay to book!!!



For reservations please contact
PENTHOUSE TRAVEL SPORTING TOURS
(Member of SURE TRAVELWAYS & T.O.U.R.S)
Pope House, Unit 2, Chenoweth Street, Durbanville, South Africa
Tel: +27 (0)21 976 8110 Fax: +27 (0)21 976 0411
Email: info@runningtours.co.za Website: www.runningtours.co.za

IMPORTANT - Prices quoted are subject to change until bookings are made and full payment is received. Your method of payment cannot be amended after the documents have been issued. Payment is acceptance that all information contained herein is correct and noted. As per airline rulings, full and correct first and surnames need to be reflected on the documentation – as per the passenger's passport. Please ensure that the correct information is given. Any costs incurred to change names will be for your account. Sure Travelways/Penthouse Travel cannot be held responsible if travellers do not have the correct personal documents or health requirements to travel. Travel Insurance Consultants has strongly recommended that you purchase travel insurance cover for the duration of your journey. Sure Travelways/Penthouse Travel acts only as an agent between the passenger and the service provider. As such, we cannot be held liable for any loss, damage, accident, delay or inconvenience caused by the principal. Please refer to the booking form and standard business terms and conditions.

© Copyright of Travelways (Pty) Ltd t/a Penthouse Travel Sporting Tours 23rd October 2017

