

OLD MUTUAL TWO OCEANS MARATHON 26 MARCH 2016
Packages with flights (O R Tambo), accommodation & transfers



Travelways Pty Ltd, t/a Penthouse Travel Sporting Tours
 Pope House, Unit 2, Chenoweth Street, O R Tamboville, South Africa

Tel: (021) 976 8110 Fax: (021) 976 0411

Email: marie@travelways.co.za

Email: nikki@travelways.co.za

Email: nicole@travelways.co.za

Website: www.runningtours.co.za / www.suretravelways.co.za

Thank you for considering us for your travel arrangements.

These prices do not include race entry, please ask us if you require.

1. Penthouse Travel is the only **OFFICIAL TRAVEL PARTNER** for the **2016 OLD MUTUAL TWO OCEANS MARATHON**.
2. We are a full service Travel Agency and since 1983 have been specialising in Sports Travel and Groups.
3. Our packages with flights include current airport taxes so there are **NO HIDDEN COSTS**.
4. **Discounted rates** on request for Springbok Atlas **SIGHTSEEING TOURS** in Cape Town and surroundings (prebooking).
5. To request reservations we require a completed booking form, T&C's (signed by each traveler) and ID copy.
6. To secure bookings 30% deposit is required within 7 days of written confirmation.
7. The balance monies will be due before 31 December 2015.

We take care of the travel details so you can concentrate on the event.

Hotel	Fri – Sun 2 nights	Thu – Sun 3 nights	Fri – Mon 3 nights	Thu – Mon 4 nights	Prices are per person
Breakwater Lodge 3* (Room only)	R 5 055	R 5 575	R 5 575	R 6 090	Sharing a Double or Twin room
Breakwater Lodge 3* (Room only)	R 5 955	R 6 925	R 6 925	R 7 890	Single room
Breakwater Lodge 3* (Room only)	R 5 310	R 5 955	R 5 955	R 6 600	Sharing a Double or Twin Business Suite
Breakwater Lodge 3* (Room only)	R 6 425	R 7 625	R 7 625	R 8 825	Single Business Suite
Park Inn 3* (Breakfast included)	R 5 515	R 5 630	R 5 630	6 225	Sharing a Double room
Park Inn 3* (Breakfast included)	R 6 950	R 7 070	R 7 070	R 8 145	Single room
SSun Waterfront 4* (Breakfast included)	R 5 620	R 6 420	R 6 420	R 7 035	Sharing a Double room
SSun Waterfront 4* (Breakfast included)	R 7 450	R 9 165	R 9 165	R 10 505	Single room
SSun Cullinan 4* (Breakfast included)	R 5 805	R 6 700	R 6 700	R 7 395	Sharing a Double room
SSun Cullinan 4* (Breakfast included)	R 7 820	R 9 720	R 9 720	R 11 225	Single room
Vineyard 4* (Breakfast included)		R 6 695	R 6 695	R 7 645	Sharing a Courtyard Facing Double room
Vineyard 4* (Breakfast included)		R 8 365	R 8 365	R 9 870	Single Courtyard Facing room
Vineyard 4* (Breakfast included)		R 7 020	R 7 020	R 8 075	Sharing a Deluxe Courtyard Facing Double room
Vineyard 4* (Breakfast included)		R 8 720	R 8 720	R 10 345	Deluxe Courtyard Facing Single room
Vineyard 4* (Breakfast included)		R 7 420	R 7 420	R 8 610	Sharing a Mountain Facing Double room
Vineyard 4* (Breakfast included)		R 9 105	R 9 105	R 10 855	Mountain Facing Single room

Date	Airline	From	+/- Time	To	+/-Time
Thu, 24 Mar	Mango	O R Tambo	07h45	Cape Town	10h00
Thu, 24 Mar	Mango	O R Tambo	10h55	Cape Town	13h10
Thu, 24 Mar	Mango	O R Tambo	13h45	Cape Town	16h00
Thu, 24 Mar	Mango	O R Tambo	15h45	Cape Town	18h00
Fri, 25 Mar	Mango	O R Tambo	05h55	Cape Town	08h10
Fri, 25 Mar	Mango	O R Tambo	07h45	Cape Town	10h00
Fri, 25 Mar	Mango	O R Tambo	10h55	Cape Town	13h10
Sun, 27 Mar	Mango	Cape Town	12h45	O R Tambo	14h50
Sun, 27 Mar	Mango	Cape Town	14h15	O R Tambo	16h20
Sun, 27 Mar	Mango	Cape Town	16h45	O R Tambo	18h50
Mon, 28 Mar	Mango	Cape Town	10h40	O R Tambo	12h45
Mon, 28 Mar	Mango	Cape Town	12h45	O R Tambo	14h50
Mon, 28 Mar	Mango	Cape Town	14h15	O R Tambo	16h20
Mon, 28 Mar	Mango	Cape Town	16h45	O R Tambo	18h50

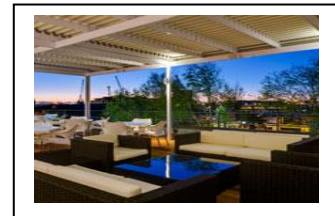
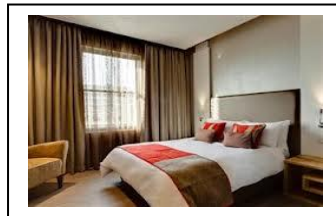
Prices are per person and include;

- Accommodation at hotel selected
- Flights as shown from Johannesburg O R Tambo (economy class)
- Transport from airport on arrival to hotel via the Two Oceans Marathon Expo*
- Transport to start of Two Oceans Marathon from Breakwater Lodge, SSun Waterfront or Cullinan*
- Transport back to hotel after the race (all hotels)*
- Entry to our Hospitality Tent at the race finish.*
- Transport from hotel to airport*
- Commemorative Gift

*See notes below

PROTEA BREAKWATER LODGE (Superior 3*)

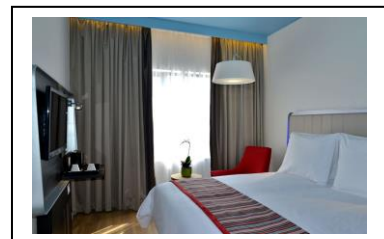
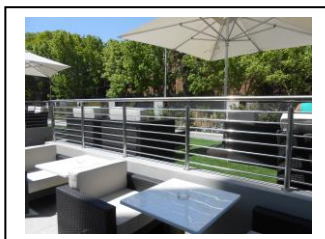
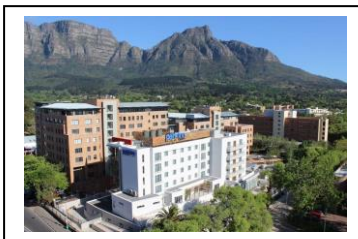
- Situated in the heart of the V & A Waterfront
- Approx. 30 to 45 minutes' drive to the race start (Newlands)
- Approx. 20 minutes' drive from the race finish (UCT)
- Free return race day transfers



Perfectly positioned in the heart of the V & A Waterfront, minutes from many eateries and entertainment centres, approximately 11 kms drive to the race start/finish (see race transfer details below). Once a 19th century prison the hotel provides comfortable accommodation that overlooks Cape Town harbour and Table Mountain. Free Wi-Fi. Each room is air conditioned and has a small fridge and tea/coffee making facilities. All guest rooms have a shower except for the business suites which have a bath and shower. Family units (up to 4 people) are available, please ask for price.

PARK INN NEWLANDS (Superior 3*)

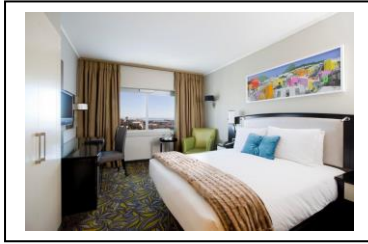
- Situated in Main Road Newlands, close to many shops and restaurants
- Walking distance (less than 100 metres) to Race start (Newlands)
- 2.5kms from the race finish (UCT)
- Free transfer from race finish



Set in a residential suburb Newlands and across the road from the race start. This new hotel offers excellent value for money. Amenities include free Wi-Fi, access to the hotel gym and outdoor swimming pool. Guest rooms are modern and bright with bathroom (shower) and tea/coffee amenities. This hotel has one restaurant and is within walking distance to shops and other restaurants. The Cape Town business district and Waterfront area are a 20 minute drive away.

SOUTHERN SUN WATERFRONT (Superior 4*)

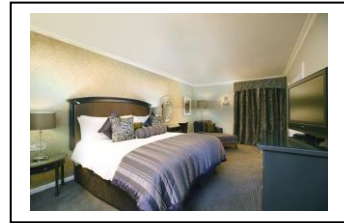
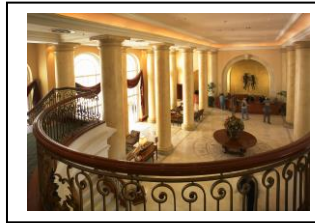
- Situated at the entrance to the Waterfront and opposite the CTICC (Expo)
- Easy walking distance to V & A Waterfront
- Approx. 30 to 45 minutes' drive to the race start (Newlands)
- Approx. 20 minutes' drive from the race finish (UCT)
- Free return race day transfers



Modern and comfortable this 4* hotel offers guests easy access to most of Cape Town's attractions. Within easy walking distance to the world-renowned V&A Waterfront, the Cape Town Convention Centre and the Cape Town CBD and approximately 9 kms drive to the race start/finish. Guest rooms are bright and spacious with luxurious bathrooms (separate bath and shower), small fridge and tea/coffee amenities. The hotel facilities include an outdoor (un-heated) pool, gym and free Wi-Fi.

SOUTHERN SUN CULLINAN (Deluxe 4*)

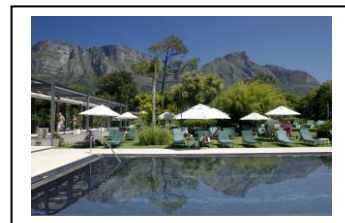
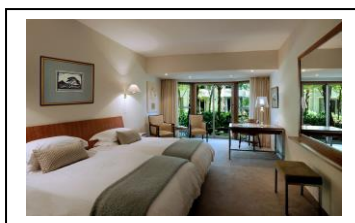
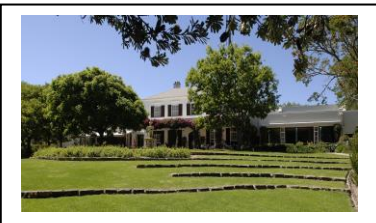
- Situated at the entrance to the Waterfront and opposite the CTICC (Expo)
- Easy walking distance to V & A Waterfront
- Approx. 30 to 45 minutes' drive to the race start (Newlands)
- Approx. 20 minutes' drive from the race finish (UCT)
- Free return race day transfers



Stylish and grand The Cullinan offers guests easy access to most of Cape Town's attractions. Within easy walking distance to the world-renowned V&A Waterfront, the Cape Town Convention Centre and the Cape Town CBD and approximately 9kms drive to the race start/finish. Complementing the rich, cultural heritage of Cape Town through timeless architecture, the opulent décor creates a mood that is a world-away-from-home, while service and attention to detail ensure your every need is taken care of. Guest rooms are elegant and spacious with luxurious bathrooms and all other amenities required feeling comfortably at home. Such amenities include the outdoor (un-heated) pool and the gym and fitness centre and free Wi-Fi.

VINEYARD HOTEL & SPA (Deluxe 4*)

- Free Carbo Loading Dinner Fri 25 March
- Walking distance (less than 1km) to Race start (Newlands)
- 3kms from the race finish (UCT)
- Free transfer from race finish



This deluxe hotel is situated in six acres of attractive landscaped parkland, in the residential suburb of Newlands. Ideally situated and within walking distance to shops, restaurants and less than 1 km of the race start. Originally built by Lady Anne Barnard in 1799, the Vineyard Hotel & Spa has a relaxing colonial feel with spectacular views of the forested slopes of Table Mountain. Guests can relax at the heated outdoor and indoor swimming pool, adjoined by a fitness centre and the international Angsana Spa (pre booking essential). For the discerning traveller looking for superior accommodation in a relaxed environment The Vineyard Hotel & Spa is excellent value for money. Free Wi-Fi and guest rooms are furnished in soft colours with luxurious bathrooms (separate bath and shower), mini-bar fridge and tea/coffee amenities. The carbo loading dinner takes place at the hotel on Fri 25th March and typically includes a buffet selection of pastas and salads (beverages and gratuities are not included).

RETURN AIRPORT TRANSFERS (included)

Our transfers are operated by Penthouse Travel Sporting Tours staff, offering friendly, personal service and care to detail.

Breakwater Lodge, Park Inn Newlands & Vineyard Hotel guests

If the flight arrives during registration times we take clients to the expo en route from the airport to your hotel. The waiting time at the Expo is usually 1 hour but can be more or less depending on how busy it is.

On the day of departure we will collect the clients and take them from the hotel to the airport.

Southern Sun Waterfront & Cullinan guests

The race registration venue is a short walk (200 metres) from Southern Sun Waterfront so we take clients to the hotel from the airport and ask that they walk to race registration in their own time.

On the day of departure we will collect the clients and take them from the hotel to the airport.

RACE DAY TRANSFERS - SAT 26 MARCH 2016 (included)

Park Inn Newlands & Vineyard Hotel guests

The hotels are a short walking distance to the race start and so runners staying at Park Inn Newlands and The Vineyard Hotel will walk down to the race start.

Breakwater Lodge & Southern Sun Waterfront & Cullinan guests

Penthouse Travel staff will collect runners from their hotel at 04h30 and take them to the race start. Spectators will be collected from their hotel at a later time (to be advised) and taken to the race finish. Journey time on race day can be between 20 to 45 minutes due to traffic.

After the race we have a shuttle service to all our hotels. Clients are asked to advise our staff in the Penthouse Travel Hospitality tent when they are ready to be taken back to their hotel. This service is complimentary if accommodation has been booked with Penthouse Travel Sporting Tours for the Two Oceans Marathon weekend.

RACE FINISH PENTHOUSE TRAVEL HOSPITALITY TENT – SAT 26 MARCH 2016 (included)

At the race finish area we have a hospitality tent, exclusively for clients who have booked accommodation and/or flights with Penthouse Travel Sporting Tours for the 2016 Two Oceans Marathon. The tent is a sheltered area at the race finish where you can relax, watch the race and enjoy refreshments. From the tent you will be taken back to your hotel.

Availability is limited so don't delay to book your place!!!

For reservations please contact

PENTHOUSE TRAVEL SPORTING TOURS

(Member of SURE TRAVELWAYS)

Pope House, Unit 2, Chenoweth Street, O R Tamboville, South Africa

Tel: (021) 976 8110 Fax: (021) 976 0411

Email: marie@travelways.co.za

Email: nikki@travelways.co.za

Email: nicole@travelways.co.za

Website: www.runningtours.co.za

IMPORTANT - Prices are applicable to residents of South Africa only. All information given is provided by the suppliers and deemed correct at the time of printing (12 October 2015). Travelways Pty Ltd, t/a Penthouse Travel Sporting Tours cannot be held responsible if any of the information is not correct. Travelways Pty Ltd, t/a Penthouse Travel Sporting Tours acts only as an agent between the passenger and the service provider. As such, we cannot be held liable for any loss, damage, accident, delay or inconvenience caused by the principal. Please refer to the booking form and standard business terms and conditions. © Copyright of Travelways (Pty) Ltd t/a Penthouse Travel Sporting Tours 12 October 2015

